

THE NATION'S CHARTMAKER SINCE 1807  
UNITED STATES - EAST COAST  
SOUTH CAROLINA  
PARTS OF  
**COOSAW AND BROAD RIVERS**

Mercator Projection  
Scale 1:40,000 at Lat. 32°30'  
North American Datum of 1983  
(World Geodetic System 1984)  
**SOUNDINGS IN FEET**  
AT MEAN LOWER LOW WATER  
Formerly CG55 794, 1st Ed., Jan 1937 C-1937-456 KAPP-222

**HORIZONTAL DATUM**  
The horizontal reference datum of this chart is North American Datum of 1983 (NAD 83), which for charting purposes is considered equivalent to the World Geodetic System 1984 (WGS 84). Geographic positions referred to the North American Datum of 1983 must be corrected an average of 0.678' northward and 0.022' westward to agree with this chart.

**CAUTION**  
Improved channels shown by broken lines are subject to shoaling, particularly at the edges.

**HEIGHTS**  
Heights in feet above Mean High Water.

**AUTHORITIES**  
Hydrography and topography by the National Ocean Service, Coast Survey, with additional data from the Corps of Engineers, Geological Survey, and U.S. Coast Guard.

**CAUTION**  
Temporary changes or defects in aids to navigation are not indicated on this chart. See Local Notice to Mariners.

**HURRICANES AND TROPICAL STORMS**  
Hurricanes, tropical storms and other major storms may cause considerable damage to marine structures, aids to navigation and moored vessels, resulting in submerged obstructions in uncharted locations.

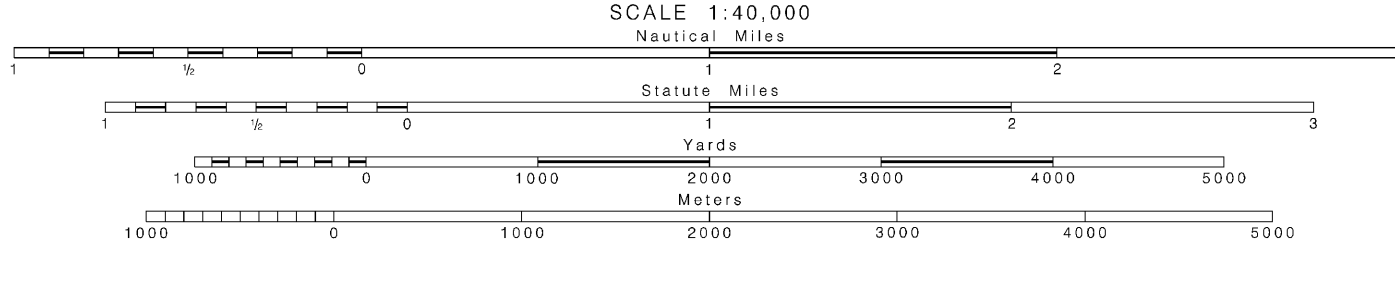
Charted soundings, channel depths and shoals may not reflect actual conditions following these storms. Flood aids to navigation may have been damaged or destroyed. Buoys may have moved from their charted positions, damaged, sunk, out-of-date or otherwise made inoperative. Mariners should not rely upon the position or operation of an aid to navigation. Works and submerged obstructions may have been displaced from charted positions. Routes may have become crooked or moved.

Mariners are urged to exercise extreme caution and are requested to report aids to navigation discrepancies and hazards to navigation to the nearest United States Coast Guard unit.

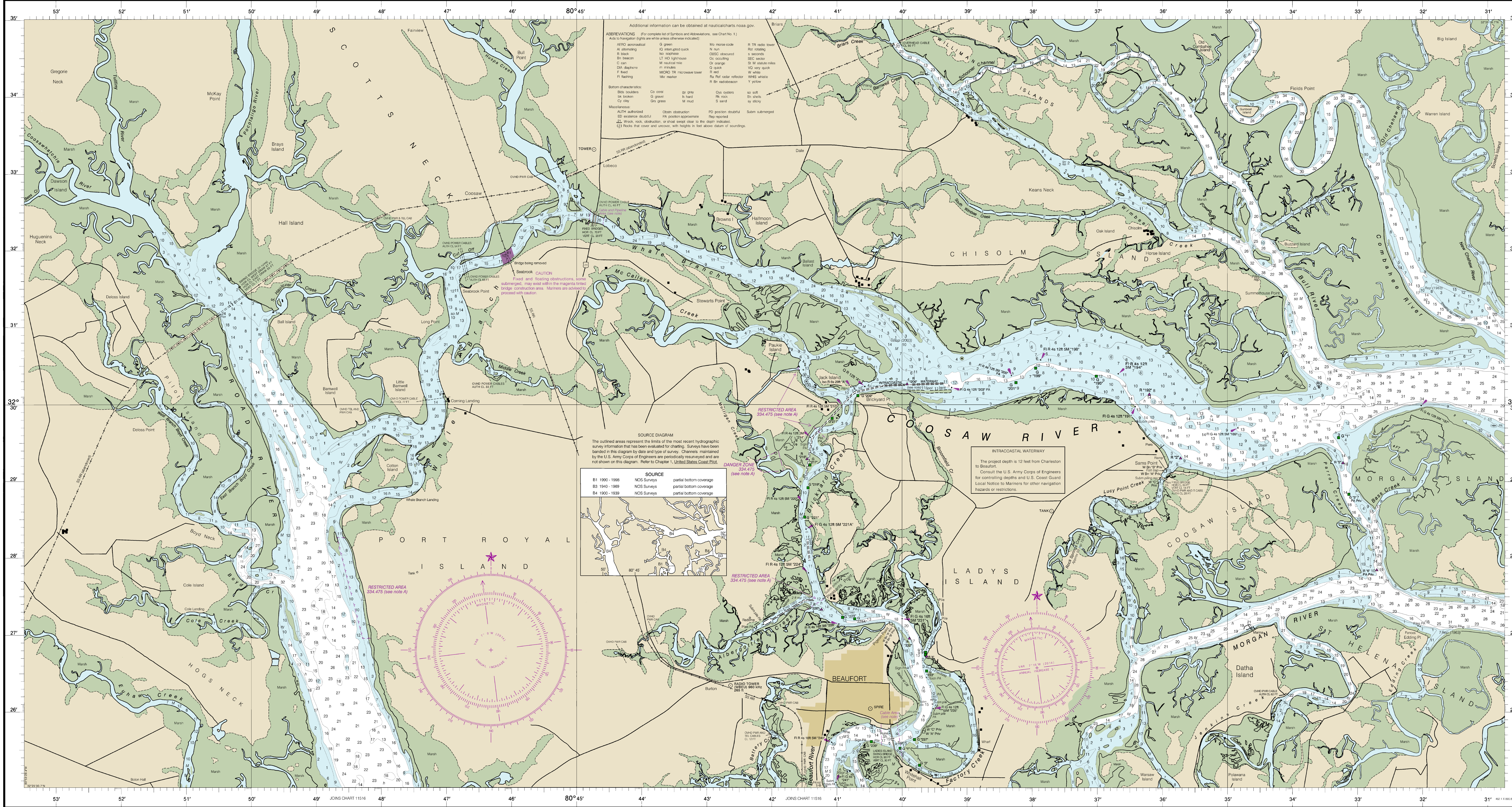
**NOTE A**  
Navigation regulations are established in Chapter 2, U.S. Coast Pilot 4. Additions or revisions to Chapter 2 are published in the Notices to Mariners. Information concerning the regulations may be obtained at the Office of the Commander, 7th Coast Guard District in Miami, FL, or at the Office of the District Engineer, Corps of Engineers in Charleston, SC.

Refer to charted regulation section numbers.

NAME	PLACE (LAT/LONG)	Height referred to datum of soundings (MLLW)			
		Mean Higher High Water	Mean High Water	Mean Lower Low Water	Low Water
Fields Point, Combahee River	(32°34'N 080°33'W)	6.8	6.4	0.2	0.2
Greenhouse Pt., Bull River	(32°31'N 080°41'W)	1.1	0.6	0.2	0.2
Brickyard Pt., Coosaw River	(32°29'N 080°41'W)	6.0	5.7	0.2	0.2
Charted Landing, White Branch	(32°28'N 080°40'W)	6.4	6.2	0.2	0.2
Lucy Point Creek Entrance	(32°27'N 080°36'W)	6.7	6.4	0.1	0.1
Beaufort Beaufort River	(32°26'N 080°30'W)	8.0	7.6	0.2	0.2



**SOUNDINGS IN FEET**



1519

1519

**11519**

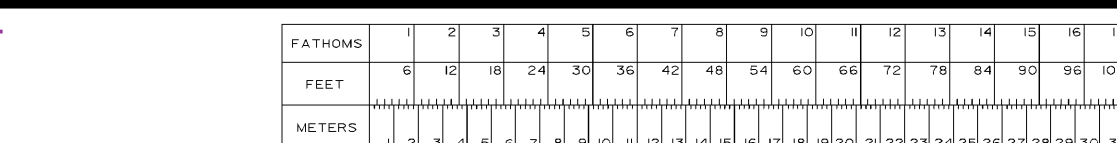
This chart has been corrected from the Notice to Mariners (NM) published weekly by the National Geospatial-Intelligence Agency and the Local Notice to Mariners (LNM) issued periodically by each U.S. Coast Guard District. The date shown in the lower left-hand corner. Chart updates corrected from Notice to Mariners published after the dates shown in the lower left-hand corner are available at nauticalcharts.noaa.gov.

NOAA encourages users to submit inquiries, discrepancies or comments about this chart at <http://www.nauticalcharts.noaa.gov/contact.htm>

Published at Washington, D.C.  
U.S. DEPARTMENT OF COMMERCE  
NATIONAL OCEANIC AND ATMOSPHERIC ADMINISTRATION  
NATIONAL OCEAN SERVICE  
COAST SURVEY

**SOUNDINGS IN FEET**

(POD) providers fulfill a vessel's requirement to carry a navigational chart "published by the National Ocean Service" in accordance with federal regulations, including but not limited to 33 C.F.R. 164.72(b), and 46 C.F.R. 28.222(a). POD charts meet stringent print standards and can be recognized by an official certification of authenticity printed on the chart. A list of POD providers can be found at: [nauticalcharts.noaa.gov/pod](http://nauticalcharts.noaa.gov/pod)



**11519**

Coosaw and Broad Rivers  
SOUNDINGS IN FEET - SCALE 1:40,000